

# HomesFriday

## Meritus offers new homes in an established location

ADVERTISER GENERATED CONTENT

### Sponsored by Meritus Homes

It's rare to find the opportunity to build a new home in an ideal location in an established, close-in suburb. However, Erin Fiegel found exactly that when she discovered The Enclave at Mill Creek.

The community of 87 low maintenance new homes is being developed by Meritus Homes at the intersection of Army Trail Boulevard and North Mill Street in central DuPage County.

Prior to purchasing, Fiegel looked at existing houses in the West suburbs, including recently renovated properties in established neighborhoods and houses that she could rehab herself. Ultimately, the fact that The Enclave at Mill Creek offered new construction in the area she sought tipped the scales.

"I'm thrilled I didn't have to compromise and settle for someone else's tastes or decor," she said. "Instead, I can pick from a wide array of selections, finishes

and options to match my personality."

Fiegel chose a Waterleaf ranch, which is one of four designs offered at The Enclave at Mill Creek. Ranch plans have 1,603 to 2,154 square feet of living space; two, three or four bedrooms; and two full baths for base prices that range from \$394,900 to \$443,900.

Second-story options add 866 to 1,090 more square feet of living space, one or two bedrooms or a loft, and another bath on the upper level. This brings the square footage up to 2,620 to 3,077 with base prices that range from \$472,900 to \$493,600.

The Waterleaf has 2,154 square feet of space, three bedrooms, two baths and an attached two-car garage. Fiegel added a few upgrades to the base model, such as a fireplace in the great room and the gourmet kitchen option. She also selected a premium

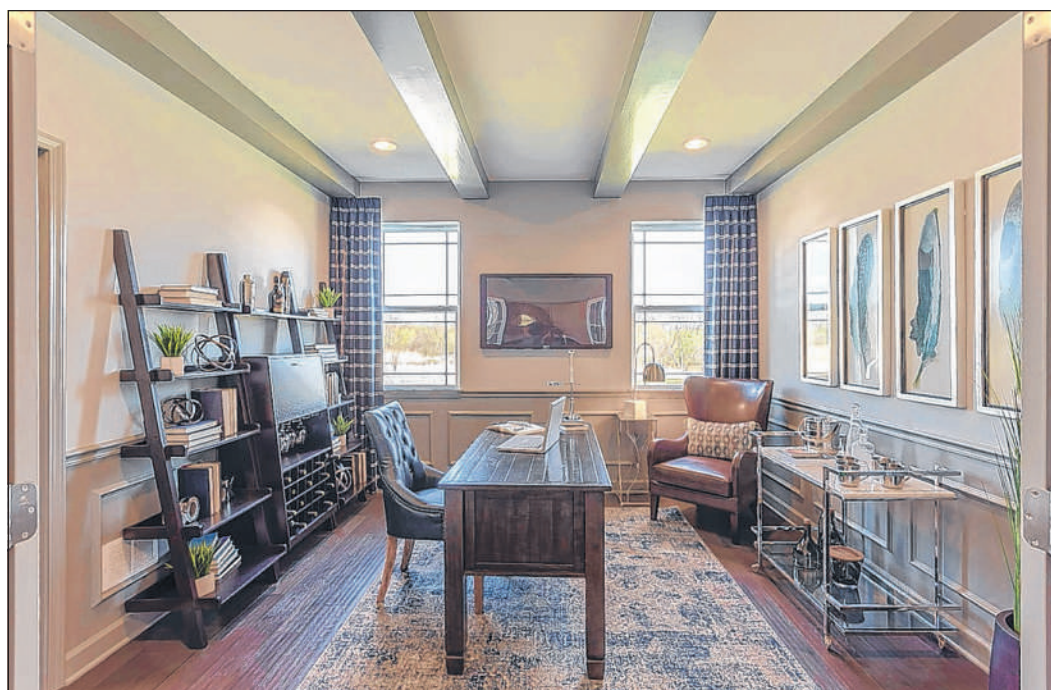
homesite that accommodates a lookout basement and upgraded to a deep-pour basement with the thought of finishing the lower level in the future.

"The main living area is comparable to what I had in my townhome," she said. "But the space is configured differently. The open layout where the great room, living room, dining room and kitchen all flow together is well thought out and functional for both everyday living and entertaining."

Also on the main level is a flex room that can serve as a hobby nook, library or den, depending on the homeowner's lifestyle. The first-floor master suite with its private bath and walk-in closet is a relaxing place to unwind. Two additional bedrooms, a full bath and a laundry room complete the first floor.

Features such as 9-foot first-floor ceilings, decorative touches, rounded drywall corners, brushed nickel finishes, central air conditioning and full basements all come standard.

Exteriors are designed to complement home styles in the surrounding neighborhoods with traditional architectural details such as brick or optional stone accents, gables and ornamental trim, which combine to create interesting roof lines. Covered entries provide shelter from inclement weather. Front, side and rear yards are fully sodded plus a landscaping package is included with each new home



PHOTOS COURTESY OF MERITUS HOMES  
The den in the Waterleaf model at The Enclave at Mill Creek in Addison is a perfect place for working from home.



The open-concept layout in the Waterleaf is comfy for everyday living as well as ideal for entertaining.

to give it instant curb appeal.

Fiegel was one of the first buyers in Phase II at The Enclave at Mill Creek, though a select few homes remain in Phase I. Overall, the property boasts abundant green space, including Westwood Creek, three ponds and a scenic sitting area. More than two thirds of the homes back up to natural areas and Phase II is set back over a bridge and adjacent to trees, an unusual find for an established suburb.

"Usually, if you want open space around your home you have to move farther away from the city," she said. "So to have this pocket where I have views of the neighboring woodlands and wetlands is rare."

Fiegel's decision to move

to The Enclave at Mill Creek came after landing a job that required more commuting into Chicago. Her current townhouse in Aurora seemed too far away. While browsing real estate listing websites, she narrowed her search with the help of a friend who had moved to Addison a few years earlier.

Another factor swaying Fiegel's decision to choose The Enclave at Mill Creek was the low maintenance lifestyle. With career and free time competing for her attention, she is happy to not have to worry about shoveling snow or doing yard work. The homeowners' association will perform all lawn care for her homesite as well as maintain common area landscaping and even handle

snow removal on her driveway. Coming from a maintenance-free townhouse, Fiegel was accustomed to this more carefree lifestyle.

The Enclave at Mill Creek is just north of Army Trail Boulevard and west of North Mill Road in Addison. The community's entrance is on the north side of Army Trail Boulevard at Links Drive and the sales office is located at 758 Fairway Drive (Enter 601 Army Trail Boulevard into GPS system to find the site.)

Two decorated models are open from 10 a.m. to 5 p.m. Monday through Saturday and 11 a.m. to 5 p.m. Sunday (closed Thursday and Friday).

For more information, call (331) 225-3646 or visit www.MeritusHomebuilders.com.

Tour 1 Move-In Ready Home

GRAND OPENING!  
PHASE II HOMESITES  
NOW AVAILABLE

RANCH AND 2-STORY HOMES

LOW-MAINTENANCE NEW HOMES  
FROM THE LOW \$400s IN DUPAGE COUNTY

Visit The Enclave  
at Mill Creek Today

Tour 1 Move-In Ready Home  
and 2 Decorated Models  
Special Phase 1 Closeout Pricing!

(331) 225-3646

Sales office: 758 Fairway Drive, just north of Army Trail Boulevard and west of North Mill Road in Addison.  
(Enter 601 Army Trail Boulevard into GPS system to find the site.)

MERITUS HOMES

"FOR THE NEXT PHASE OF YOUR LIFE"

Open Monday - Wednesday, Saturday 10 am to 5 pm  
Sunday 11 am to 5 pm. Closed Thursday and Friday.

meritushomebuilders.com